

**SELLER/ LANDLORD**  
(PER APPROVED LD PLAN DATED 4-20-11)

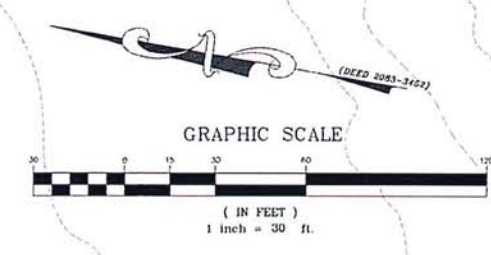
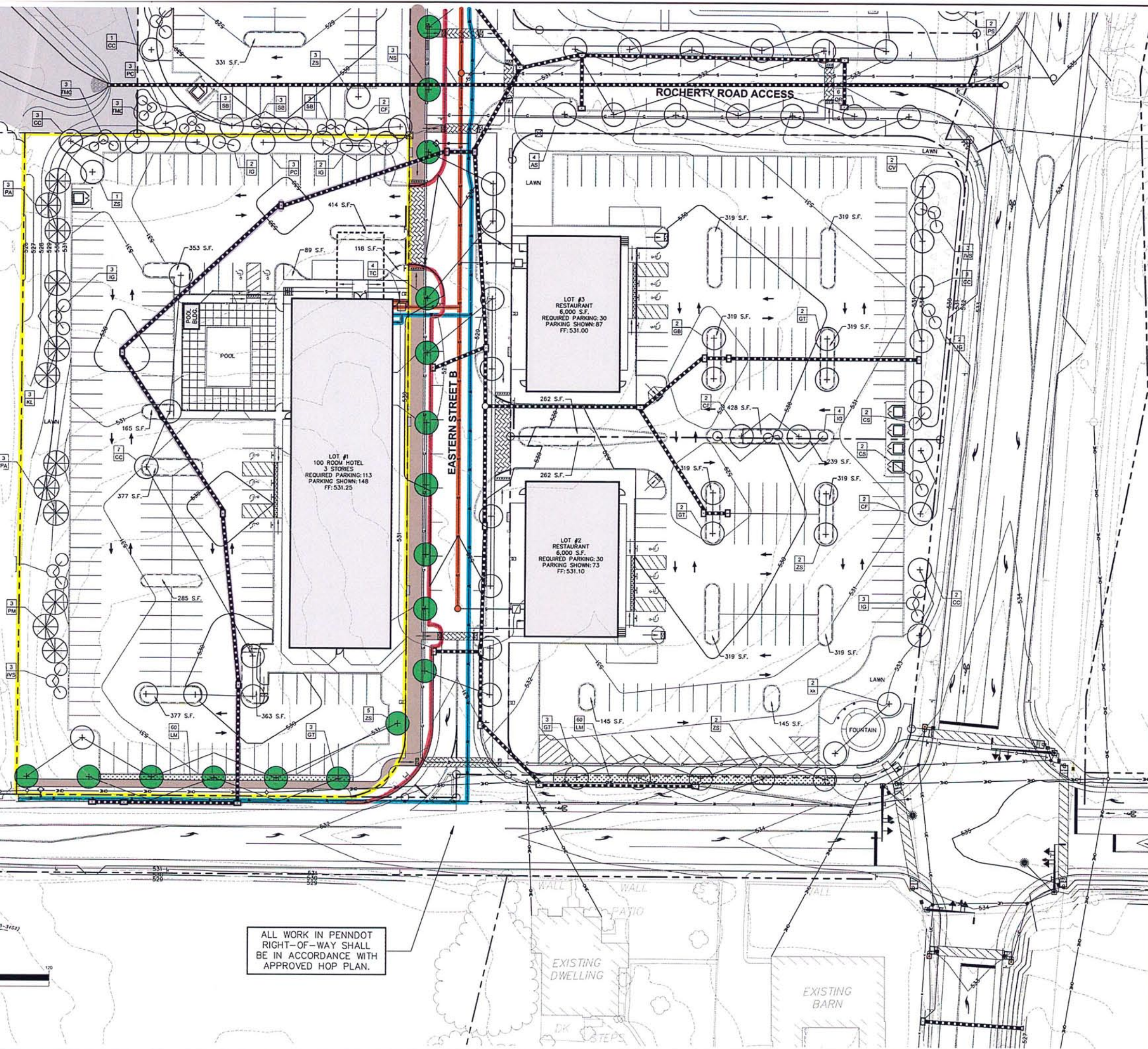
- STRIP TOPSOIL & LEAVE PILE
- -ROUGH GRADE LOT TO SUBGRADE
- -ROAD CURBING AS SHOWN
- -LANDSCAPING AS SHOWN
- -STORMWATER PIPING & INLETS AS SHOWN
- -STUB SEWER LATERAL
- -STUB WATER SERVICE

**BUYER/TENANT**

- FINAL GRADING OF LOT
- CURB, STONE & PAVE LOT
- COMPLETE REMAINING LANDSCAPING PER LAND DEVELOPMENT PLAN
- DUMPSTER ENCLOSURE
- INTERIOR PARKING LOT SITE LIGHTING
- -ALL SIDEWALKS EXCEPT ONE THAT ARE ON PERIMETER ROADS, AS SHOWN

**LOT #1**

- -ACREAGE = 2.42



ALL WORK IN PENNDOT RIGHT-OF-WAY SHALL BE IN ACCORDANCE WITH APPROVED HOP PLAN.

REVISION	DATE	BY	CHKD
PER LEASOR COUNTY PLANS	12/20/11	WJL/ZE	WJL/ZE
PER LEASOR COUNTY PLANS	12/20/11	WJL/ZE	WJL/ZE
PER DEP OF LIBANON PLAN REVISIONS	04/11/12	WJL/ZE	WJL/ZE
PER NORTH CORNWALL TOWNSHIP AUTHORITY	05/17/12	WJL/ZE	WJL/ZE
PER DEP OF LIBANON PLAN REVISIONS	07/26/12	WJL/ZE	WJL/ZE
PER LEASOR COUNTY CONCEPTUAL DESIGN	09/14/12	WJL/ZE	WJL/ZE
CONTRACT NO. 07/20/12	09/14/12	WJL/ZE	WJL/ZE
LETTER DATED 07/27/2012	07/27/2012	WJL/ZE	WJL/ZE
	09/19/2012	WJL/ZE	WJL/ZE

**LANDSCAPE PLAN**  
PRELIMINARY/FINAL PLAN PHASE 1 AND 1A  
for  
**SPRINGWOOD DEVELOPMENT PARTNERS**  
located in  
North Cornwall and South Lebanon Townships  
Lebanon County, Pennsylvania

**SES**  
Steinbeck Engineering & Surveying, Inc.  
279 North Zions Mill Road / Suite 4  
Lebanon, Pennsylvania 17042  
Phone: (717) 272-7110  
Fax: (717) 272-7348

FIELD CREW:	JQ/JH
BASE MAP:	M.P.O.
DRAWN:	JSE
DESIGN:	MAM
CHECKED:	MAM
DATE:	04/20/11
SCALE:	1" = 30'
PROJECT	#907-06-002